

# Introduction Letter

## for ESTA Individual Supporters of ESTA



### **Contents**

Welcome to ESTA!  
What is ESTA?  
ESTA targets and goals  
Your ESTA membership benefits  
ESTA Achievements  
ESTA Organization  
Membership features

### **Welcome to ESTA!**

First of all, we kindly welcome you as a Individual Supporter of ESTA Europe. It is great that you joined and thus reinforce the ESTA association! With your contribution, ESTA Europe will be able to further develop and strengthen her position regarding harmonization and co-operation on a European level on behalf of the heavy transport and crane rental companies.

### **What is ESTA?**

ESTA is the leading European association for the abnormal road transport and mobile crane rental industry. On a European level, ESTA represents national trade associations whose members are crane rental companies or abnormal road transport companies.



# Introduction Letter

## ***ESTA Targets and Goals***

ESTA's primary objectives are:

1. European harmonization of rules and regulations for crane rental and abnormal road transport
2. To represent our industry in Europe
3. To enhance safety standards in our industry

For that purpose, ESTA:

- is the *number one European representative* of abnormal road transport and mobile crane rental companies
- strives, together with the manufacturers, towards a continuous improvement of equipment to create a *safer working environment*
- is working on *harmonization* of equipment travel rules, general conditions of work and permitting regulations throughout Europe
- wants to enhance the *quality* provided to our clients and promote *safer ways of working*
- maintains an *inter-European network* for national Associations, companies and manufacturers
- represents the European Heavy Lift industry in the international *ICSA organization* and the Abnormal Transport industry in the *IRU*.

## ***Your membership benefits***

As an ESTA Individual Supporter, you enjoy various benefits, such as:

- *Extensive expertise* on European regulations and legislation involving our industry
- *A European wide network* of transport and lifting associations and -companies
- *Opportunity to participate in* ESTA Section Cranes, Section Transport
- *One free dinner seat* at the annual ESTA Users Night and Awards Dinner Event
- Access to the *members' website* and regular *newsletters*

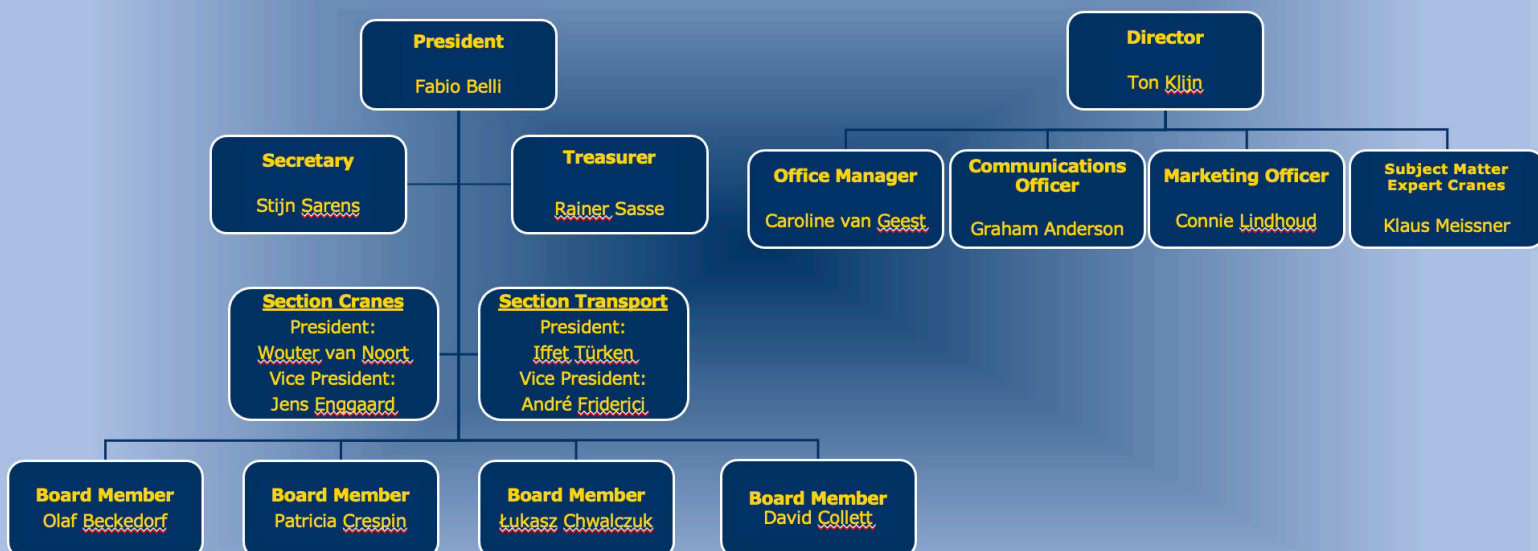
## ***ESTA Achievements***

Since its establishment in 1976, great achievements have been realized by ESTA. A short selection:

- Set up of the *European Crane Operators Licence*
- Best Practice Guide *SPMT*
- Best Practice Guide for *Transport and Installation of WTG Systems*
- *ESTA General Conditions* (European standard set of terms and conditions on heavy lifting and transport services)
- Harmonized European form for the technical admittance of trucks and trailers in permitting procedures

# Introduction Letter

## ESTA Management Organogram



## Membership Features

Becoming an ESTA Individual Supporter is open to:

- all private persons with an interest in the field of crane rental and abnormal transport who are at least 18 years old and are legally competent.

Furthermore, the ESTA Supporter endorses ESTA's goals as an association.

Annual ESTA Individual Supporter fee: € 500,00



European Association of Abnormal Road Transport and Mobile Cranes [ESTA]

postal address: Lotte Beesestraat 4, NL-2331 KJ Leiden, The Netherlands

contact: Mrs. Caroline van Geest | e-mail address: awards@estaeurope.eu