

# ESTA NEWSLETTER

## 2024 - ISSUE 3 - UK



### Join us in Istanbul next month

ESTA's Autumn Meetings will be held in Istanbul on October 24 and 25 at the invitation of Turkish member association YMB.

Please register [here](#) for you meetig participation

If any member wants to add a subject to the agendas for discission, they are invited to contact the ESTA Office at:

[officemanager@estaeurope.eu](mailto:officemanager@estaeurope.eu)

### In this edition

- **Members asked to boost backing for HSE work**
- **Call for common European electronic co-driver systems**
- **European optimism on marking and lighting regs**
- **Positive response to winch gearbox report**
- **Serbia's Tenge doo joins ESTA**
- **Germany parking survey - watch this space**
- **Review underway of LORM best practice guide**
- **Work starts on ESTA Awards 2025**



**YÜK MÜHENDİSLİĞİ  
BİRLİĞİ**



## ESTA calls on members to boost backing for HSE work

ESTA is calling on its members to encourage their own health and safety experts to support the expanding work of the association's HSE Commission as it campaigns for the harmonization of European HSE regulations and systems.

The project is being led by ESTA Section Transport President Iffet Türken who said: "Common standards would reduce the need for unnecessary re-training of operatives who work across borders and jurisdictions and would dramatically reduce the paperwork required to comply with those different countries' rules and regulations."

Türken, who is an Executive Board Member of trailer manufacturer Kässbohrer, stressed: "Unified standards will not only enhance safety but also improve operational consistency and efficiency."

ESTA's HSE Commission plans to present its first report on minimum mandatory training requirements to ESTA's autumn meeting in Istanbul in October.

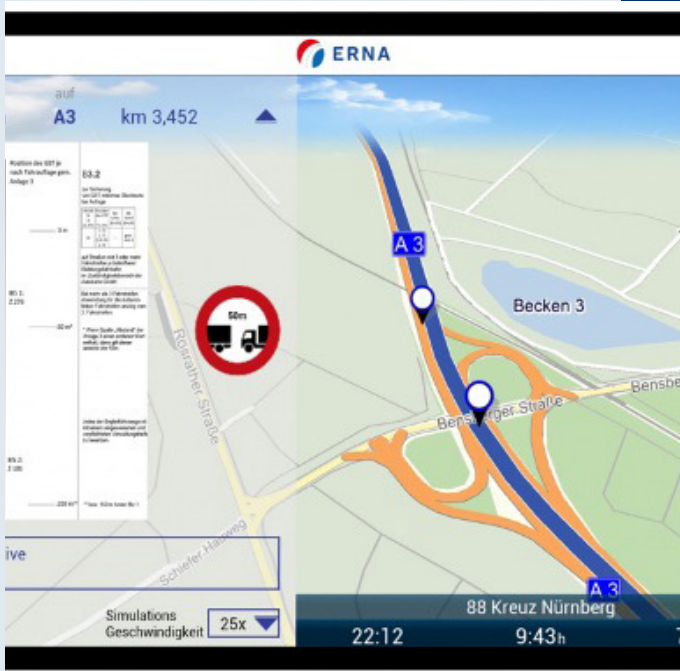
The next step will be the creation of a dedicated platform for exchanging HSEQ experiences among ESTA members.

“

***"Unified standards will not only enhance safety but also improve operational consistency and efficiency."***

***Mrs. Iffet Türken***

”



## Call for European electronic co-driver system after ERNA's German success.

Transport authorities around Europe should adopt standardised electronic permitting, route and driver support systems as a way to both improve safety and efficiency in the heavy transport industry.

That is the firm view of ESTA following Germany's country-wide acceptance of ERNA, the Efficient Road Navigation Assistant developed by ESTA member Sommer, the German heavy transport support company.



# ERNA

ESTA Director Ton Klijn said: "We are delighted at the decision taken by the German authorities and we hope that this is the first step towards the development of an agreed common system right across Europe."

Current paper-based systems mean trucks have to carry huge numbers of documents which is both inefficient, less safe and increases the chance of loss, unintentional errors and delays.

There is widespread acceptance that electronic systems are preferable, but ESTA wants to ensure that common systems and standards are agreed across Europe.

ERNA – which is available in 13 languages – is a certified digital driver assistance for the heavy and high-capacity transport industry.

More information on ERNA: [www.sommer-europe.com](http://www.sommer-europe.com) or [www.e-beifahrer.de](http://www.e-beifahrer.de)



## European optimism on marking and lighting regulations

ESTA is optimistic that new regulations to harmonize marking and lighting on heavy transport will be contained in the EU's revised Weights and Dimensions Directive (96/53) that is currently being considered by the Council of Ministers.

The association has been campaigning on this issue for more than five years since it set up a specialist working group which produced detailed recommendations.

They were originally presented to the UNECE committee responsible for administering international conventions on traffic regulations, but progress stalled due to the backlog of work caused by the Covid pandemic.

Now ESTA's focus has turned to Brussels' proposed revision of the Weights and Dimensions Directive which has already been backed by the European Parliament and has entered a process of consultation with the Council following the European elections in June.

The revised directive contains measures to harmonise the numerous and complex rules governing abnormal transport, including a provision that Member States shall cooperate to "avoid the multiplicity of vehicle markings and signalling" alongside a proposed obligation on the European Commission to ensure that such a provision is implemented.

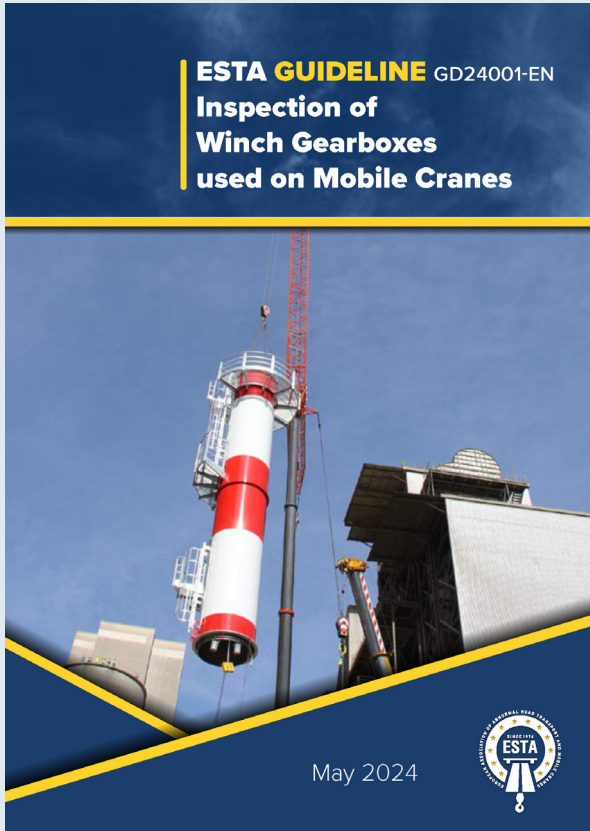
Iffet Türken, ESTA Section Transport President and Executive Board Member of trailer manufacturer Kässbohrer said: "This is very good news indeed and shows that we are slowly and steadily making progress, even though it is taking far longer than we would like.

"The current situation is absolutely ridiculous. The rules for marking and lighting of abnormal transports are different in every EU country...ESTA is simply trying to introduce some unity and common sense here."

The original recommendations are on the ESTA website [here](#)

# Positive response to freely available winch gearbox maintenance report

The new guide on mobile crane winch gearbox maintenance published by ESTA in July - has received strong interest and has been accessed over 1,000 times after being made freely available to any interested organisation.



Circulation of guides produced by ESTA is normally restricted to members, but ESTA believes there is growing interest in this issue from a wide range of non-members such as regulators and health and safety bodies. Supporters believe the new proposals could both improve safety and – in some cases – save money.

The current regime involves a major overhaul after ten years to check that the winch gearbox is still in good condition, but many experts argue that the ten-year threshold is an arbitrary deadline and does not reflect the equipment's actual usage.

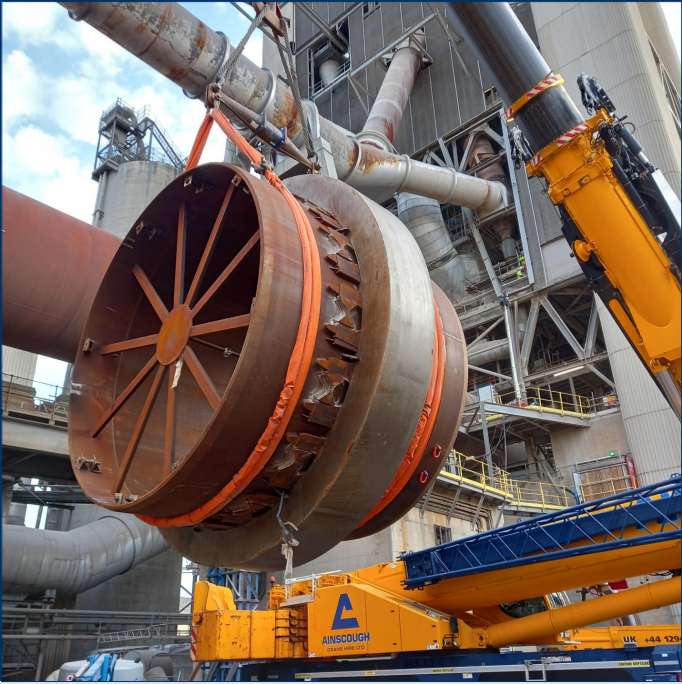
ESTA's expert group has produced a maintenance regime that is based on technical analysis.

ESTA is evaluating the responses and will decide whether to incorporate them into a second edition in due course.

The guide can be downloaded from the Library section of the ESTA website. Further comments are welcome.

The following stakeholders have supported the development of this Best Practice Guide:

Bosch Rexroth AG	Germany	Gearbox manufacturer
ESTA	The Netherlands	Association
Liebherr-Components Biberach GmbH	Germany	Gearbox manufacturer
Liebherr-Werk Ehingen GmbH	Germany	Crane manufacturer
Mammoet B.V.	The Netherlands	Operating company
Manitowoc Crane Group Germany GmbH	Germany	Crane manufacturer
OELCHECK GmbH	Germany	Laboratory
Polaris Laboratories	Poland	Laboratory
Sarens N.V.	Belgium	Operating company
Siebenhaar Antriebstechnik GmbH	Germany	Gearbox manufacturer
Tadano Europe GmbH	Germany	Crane manufacturer
TotalEnergies LubAnac	Belgium	Laboratory
ZOLLERN GmbH & Co KG	Germany	Gearbox manufacturer



## Review underway of LORM best practice guide

The ESTA working group responsible for producing the first draft of the association's Lifting Operation Risk Management best practice guide is currently reviewing responses with a view to publishing a second version during the Autumn Section Crane Meeting in Istanbul next month.

The first draft was presented by ESTA working group member Blanca Claeysens – managing director of ASA France – to the association's Section Crane meeting in Paris at the end of April.

ESTA intends the new guidelines to help companies assess the risks involved in different types of work and give them advice on how to protect themselves using state-of-the-art work preparation and properly drafted terms and conditions.

The first draft is freely available to members in the Knowledge Base section of the ESTA website.

## Parking - watch this space

ESTA is talking to German petrol station and parking operator Serways about adapting a number of their sites to accommodate abnormal transports.

Discussions are underway about which parking locations in the country should be the top priorities - suggestions from members are welcome - and ESTA plans to send a survey out to members before our Autumn meeting in Istanbul in October.

ESTA has identified the lack of parking spaces and rest facilities for HGV drivers in general and abnormal transport drivers in particular as a priority.

---

Planning work for the ESTA Awards 2025 has started. Details of the entry forms, categories and deadline will be release in due course.

Any company interested in taking up one of the limited number of awards sponsorship places should contact ESTA Marketing Manager **Connie Lindhoud**.

## NEW ESTA MEMBER

### Serbia's Tenge doo joins ESTA

Serbian rental company Tenge doo has joined ESTA as a Special Member, representing the Serbian heavy transport and lifting industry.

Headquartered in the Serbian capital Belgrade, Tenge doo was founded in 2012 and is the first Serbian company or organisation to join ESTA.



## SUPPORT ESTA!

If you and your organisation would like to become more involved in ESTA's work, and take part in some top quality and enjoyable networking at the same time.

**then why not see if you are eligible to become an official ESTA Supporter.**

It costs just 840 euros a year and comes with a range of benefits. To find out more, go to [here](#)



SAVE THE DATE  
10 APRIL 2025

The Westin Grand Munich  
Munich, Germany

ESTA  
AWARDS  
OF EXCELLENCE